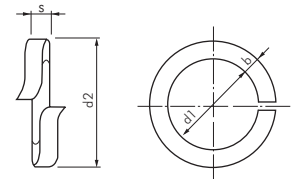


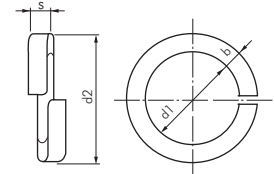
Federringe

DIN 127 A/B

Typ Form A Stahl verzinkt	Typ Form B Edelstahl A2	d1	d2 (max.)	b	s	für Schrauben
127A-3	127B-3 ES	3,1	6,2	1,3	0,8	M 3
127A-4	127B-4 ES	4,1	7,6	1,5	0,9	M 4
127A-5	127B-5 ES	5,1	9,2	1,8	1,2	M 5
127A-6	127B-6 ES	6,1	11,8	2,5	1,6	M 6
127A-8	127B-8 ES	8,1	14,8	3,0	2,0	M 8
127A-10	127B-10 ES	10,2	18,1	3,5	2,2	M 10
127A-12	127B-12 ES	12,2	21,1	4,0	2,5	M 12
127A-14	127B-14 ES	14,2	24,1	4,5	3,0	M 14
127A-16	127B-16 ES	16,2	27,4	5,0	3,5	M 16
127A-18	127B-18 ES	18,2	29,4	5,0	3,5	M 18
127A-20	127B-20 ES	20,2	33,6	6,0	4,0	M 20
127A-22	---	22,5	35,9	6,0	4,0	M 22
127A-24	127B-24 ES	24,5	40,0	7,0	5,0	M 24
127A-27	127B-27 ES	27,5	43,0	7,0	5,0	M 27
127A-30	127B-30 ES	30,5	48,2	8,0	6,0	M 30
127A-33	---	33,5	55,2	10,0	6,0	M 33
127A-36	---	36,5	58,2	10,0	6,0	M 36
127A-39	---	39,5	61,2	10,0	6,0	M 39
127A-42	---	42,5	68,2	13,0	7,0	M 42



Form A (aufgebogen)



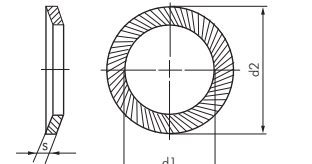
Form B (glatt)



Original Schnorr-Sicherheitscheiben

S-Form

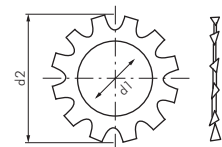
Typ Stahl geschwärzt	Typ Edelstahl A2	d1	d2	s	für Schrauben
USS-S3	USS-S3 ES	3,2	5,5	0,45	M 3
USS-S4	USS-S4 ES	4,3	7,0	0,5	M 4
USS-S5	USS-S5 ES	5,3	9,0	0,6	M 5
USS-S6	USS-S6 ES	6,4	10,0	0,7	M 6
USS-S8	USS-S8 ES	8,4	13,0	0,8	M 8
USS-S10	USS-S10 ES	10,5	16,0	1,0	M 10
USS-S12	USS-S12 ES	13,0	18,0	1,1	M 12
USS-S14	---	15,0	22,0	1,5	M 14
USS-S16	---	17,0	24,0	1,3	M 16
USS-S18	---	19,0	27,0	1,5	M 18
USS-S20	---	21,0	30,0	1,5	M 20
USS-S24	---	25,6	36,0	1,8	M 24
USS-S30	---	31,6	45,0	2,0	M 30



Zahnscheiben außengezahnt

DIN 6797 A

Typ Stahl verzinkt	Typ Edelstahl A2	d1	d2	für Schrauben
6797A-3	6797A-3 ES	3,2	6,0	M 3
6797A-4	6797A-4 ES	4,3	8,0	M 4
6797A-5	6797A-5 ES	5,3	10,0	M 5
6797A-6	6797A-6 ES	6,4	11,0	M 6
6797A-8	6797A-8 ES	8,4	15,0	M 8
6797A-10	6797A-10 ES	10,5	18,0	M 10
6797A-12	6797A-12 ES	13,0	20,5	M 12
6797A-14	---	15,0	24,0	M 14
6797A-16	6797A-16 ES	17,0	26,0	M 16
6797A-19	---	19,0	30,0	M 18
6797A-20	---	21,0	33,0	M 20
6797A-24	---	25,0	38,0	M 24



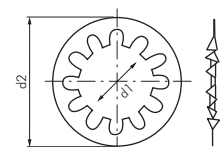
Form A = außengezahnt



Zahnscheiben innengezahnt

DIN 6797 J

Typ Stahl verzinkt	Typ Edelstahl A2	d1	d2	für Schrauben
6797J-3	6797J-3 ES	3,2	6,0	M 3
6797J-4	6797J-4 ES	4,3	8,0	M 4
6797J-5,1	---	5,1	9,0	---
6797J-5	6797J-5 ES	5,3	10,0	M 5
6797J-6	6797J-6 ES	6,4	11,0	M 6
6797J-8	6797J-8 ES	8,4	15,0	M 8
6797J-10	6797J-10 ES	10,5	18,0	M 10
6797J-12	6797J-12 ES	13,0	20,5	M 12
6797J-14	---	15,0	24,0	M 14
6797J-16	6797J-16 ES	17,0	26,0	M 16
6797J-19	---	19,0	30,0	M 18
6797J-20	---	21,0	33,0	M 20
6797J-24	---	25,0	38,0	M 24



Form J = innengezahnt

