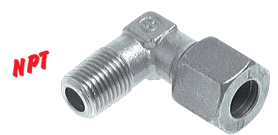
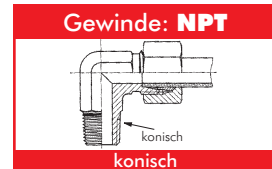


# Stahl- & Edelstahl-Schneidringverschraubungen ISO 8434-1

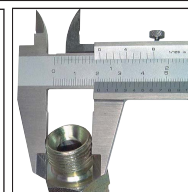
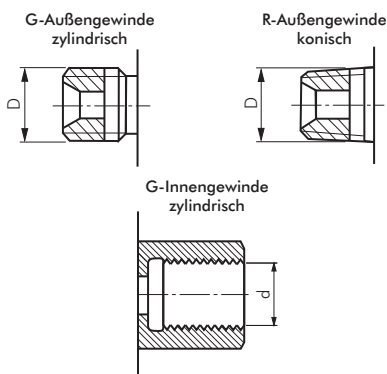
## Winkel-Einschraubverschraubungen (NPT-Gewinde)

Typ	Typ	Typ Klemmring	Rohr Ø	Einschraub-
Stahl verzinkt	1.4571	1.4571 (NC)	außen	gewinde
<b>sehr leichte Baureihe</b>				
WE 4 LLR NPT	WE 4 LLR ES NPT	---	4 LL	NPT 1/8"
WE 6 LLR NPT	WE 6 LLR ES NPT	---	6 LL	NPT 1/8"
WE 8 LLR NPT	WE 8 LLR ES NPT	---	8 LL	NPT 1/8"
<b>leichte Baureihe</b>				
WE 6 LR NPT	WE 6 LR ES NPT	WE 6 LR NC NPT	6 L	NPT 1/8"
WE 6 LR 1/4 NPT	WE 6 LR 1/4 ES NPT	WE 6 LR 1/4 NC NPT	6 L	NPT 1/4"
---	WE 6 LR 3/8 ES NPT	WE 6 LR 3/8 NC NPT	6 L	NPT 3/8"
WE 8 LR NPT	WE 8 LR ES NPT	WE 8 LR NC NPT	8 L	NPT 1/4"
---	WE 8 LR 1/8 ES NPT	WE 8 LR 1/8 NC NPT	8 L	NPT 1/8"
WE 10 LR NPT	WE 10 LR ES NPT	WE 10 LR NC NPT	10 L	NPT 1/4"
---	WE 10 LR 3/8 ES NPT	WE 10 LR 3/8 NC NPT	10 L	NPT 3/8"
WE 12 LR NPT	WE 12 LR ES NPT	WE 12 LR NC NPT	12 L	NPT 3/8"
---	WE 12 LR 1/4 ES NPT	WE 12 LR 1/4 NC NPT	12 L	NPT 1/4"
---	WE 12 LR 1/2 ES NPT	WE 12 LR 1/2 NC NPT	12 L	NPT 1/2"
WE 15 LR NPT	WE 15 LR ES NPT	WE 15 LR NC NPT	15 L	NPT 1/2"
WE 18 LR NPT	WE 18 LR ES NPT	WE 18 LR NC NPT	18 L	NPT 1/2"
WE 22 LR NPT	WE 22 LR ES NPT	WE 22 LR NC NPT	22 L	NPT 3/4"
WE 28 LR NPT	WE 28 LR ES NPT	---	28 L	NPT 1"
WE 35 LR NPT	WE 35 LR ES NPT	---	35 L	NPT 1 1/4"
WE 42 LR NPT	WE 42 LR ES NPT	---	42 L	NPT 1 1/2"
<b>schwere Baureihe</b>				
WE 6 SR NPT	WE 6 SR ES NPT	WE 6 SR NC NPT	6 S	NPT 1/4"
---	WE 6 SR 3/8 ES NPT	WE 6 SR 3/8 NC NPT	6 S	NPT 3/8"
---	WE 6 SR 1/2 ES NPT	WE 6 SR 1/2 NC NPT	6 S	NPT 1/2"
WE 8 SR NPT	WE 8 SR ES NPT	WE 8 SR NC NPT	8 S	NPT 1/4"
---	WE 8 SR 3/8 ES NPT	WE 8 SR 3/8 NC NPT	8 S	NPT 3/8"
---	WE 8 SR 1/2 ES NPT	WE 8 SR 1/2 NC NPT	8 S	NPT 1/2"
WE 10 SR NPT	WE 10 SR ES NPT	WE 10 SR NC NPT	10 S	NPT 3/8"
---	WE 10 SR 1/4 ES NPT	WE 10 SR 1/4 NC NPT	10 S	NPT 1/4"
WE 12 SR NPT	WE 12 SR ES NPT	WE 12 SR NC NPT	12 S	NPT 3/8"
---	WE 12 SR 1/4 ES NPT	WE 12 SR 1/4 NC NPT	12 S	NPT 1/4"
---	WE 12 SR 1/2 ES NPT	WE 12 SR 1/2 NC NPT	12 S	NPT 1/2"
WE 14 SR NPT	WE 14 SR ES NPT	WE 14 SR NC NPT	14 S	NPT 1/2"
---	WE 14 SR 3/8 ES NPT	WE 14 SR 3/8 NC NPT	14 S	NPT 3/8"
WE 16 SR NPT	WE 16 SR ES NPT	WE 16 SR NC NPT	16 S	NPT 1/2"
WE 20 SR NPT	WE 20 SR ES NPT	WE 20 SR NC NPT	20 S	NPT 3/4"
WE 25 SR NPT	WE 25 SR ES NPT	WE 25 SR NC NPT	25 S	NPT 1"
WE 30 SR NPT	WE 30 SR ES NPT	---	30 S	NPT 1 1/4"
WE 38 SR NPT	WE 38 SR ES NPT	---	38 S	NPT 1 1/2"



## Anschlüsse mit G-Gewinde/R-Gewinde

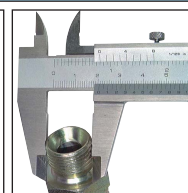
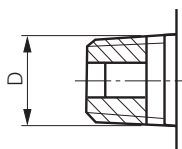
Nennmaß	Gangzahl auf 1 Zoll	D	d
G 1/8"	28	9,7	8,6
G 1/4"	19	13,2	11,5
G 3/8"	19	16,7	15,0
G 1/2"	14	21,0	18,6
G 5/8"	14	22,9	20,6
G 3/4"	14	26,4	24,1
G 1"	11	33,3	30,3
G 1 1/4"	11	41,9	39,0
G 1 1/2"	11	47,8	44,9
G 2"	11	59,6	56,7
G 2 1/2"	11	75,2	72,2
G 3"	11	87,9	84,9
G 4"	11	113,0	110,1
G 5"	11	138,4	135,4
G 6"	11	163,8	160,9



## Anschlüsse mit NPT-Gewinde

Nennmaß	Gangzahl auf 1 Zoll	D
NPT 1/8"	27	10,3
NPT 1/4"	18	13,7
NPT 3/8"	18	17,2
NPT 1/2"	14	21,3
NPT 3/4"	14	26,7
NPT 1"	11,5	33,4
NPT 1 1/4"	11,5	42,2
NPT 1 1/2"	11,5	48,3
NPT 2"	11,5	60,3
NPT 2 1/2"	8	73,0
NPT 3"	8	88,9

Amerikanisches Standardaußengewinde NPT



Weitere Gewindetabellen finden Sie auf Seite 1051.

Alle Angaben verstehen sich als unverbindliche Richtwerte! Für nicht schriftlich bestätigte Datenauswahl übernehmen wir keine Haftung. Druckangaben beziehen sich, soweit nicht anders angegeben, auf Flüssigkeiten der Gruppe II bei +20°C.