

Flanschbefestigung, Serie MF1, MF2

- Zylinderbefestigung nach ISO 15552

- geeigneter Kolben-Ø 125 mm



Normen

ISO 15552

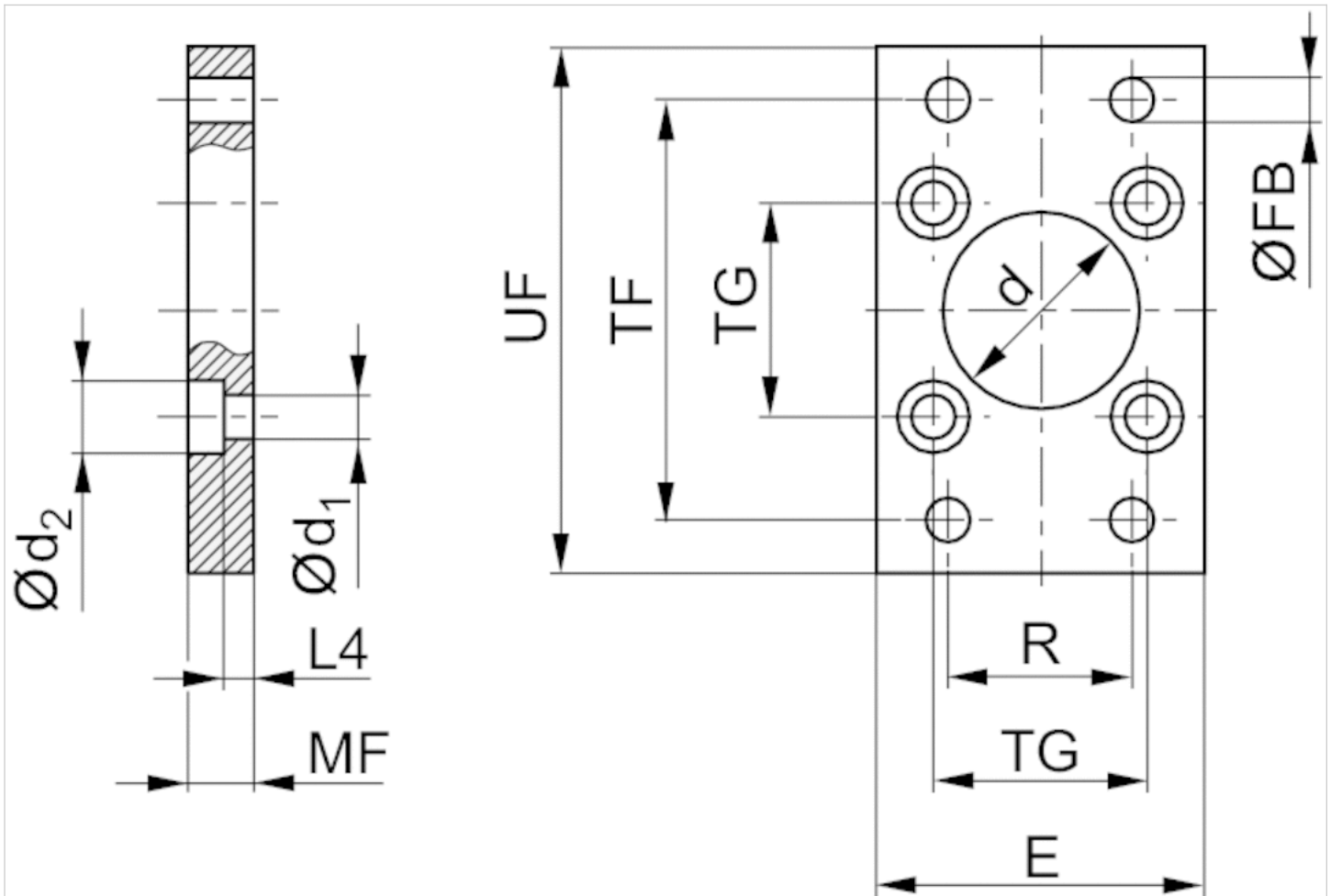
Technische Daten

| Materialnummer | Kolben-Ø | Bohrung-Ø CR |
|----------------|----------|--------------|
| 1827001277 | 32 mm | 30 mm |
| 1827001278 | 40 mm | 35 mm |
| 1827001279 | 50 mm | 40 mm |
| 1827001499 | 63 mm | 45 mm |
| 1827001281 | 80 mm | 45 mm |
| 1827001282 | 100 mm | 55 mm |
| 1827004861 | 125 mm | 60 mm |

Technische Informationen

| Werkstoff | |
|-----------|----------|
| Werkstoff | Stahl |
| | verzinkt |
| Schrauben | Stahl |
| | verzinkt |

Abmessungen



Abmessungen

| Materialnummer | Kolben-Ø | Ød H11 | Ød1 | Ød2 | E 1) | ØFB | L4 | MF | R | TF | TG | UF |
|----------------|----------|--------|-----|-----|------|-----|------|----|----|-----|-----------|-----|
| 1827001277 | 32 mm | 30 | 6.6 | 11 | 50 | 7 | 4.5 | 10 | 32 | 64 | 32,5 ±0,2 | 80 |
| 1827001278 | 40 mm | 35 | 6.6 | 11 | 55 | 9 | 4.5 | 10 | 36 | 72 | 38 ±0,2 | 90 |
| 1827001279 | 50 mm | 40 | 9 | 15 | 65 | 9 | 6 | 12 | 45 | 90 | 46,5 ±0,2 | 110 |
| 1827001499 | 63 mm | 45 | 9 | 15 | 75 | 9 | 6 | 12 | 50 | 100 | 56,5 ±0,2 | 125 |
| 1827001281 | 80 mm | 45 | 11 | 18 | 100 | 12 | 9 | 16 | 63 | 126 | 72 ±0,2 | 154 |
| 1827001282 | 100 mm | 55 | 11 | 18 | 120 | 14 | 9 | 16 | 75 | 150 | 89 ±0,2 | 186 |
| 1827004861 | 125 mm | 60 | 14 | 20 | 140 | 16 | 10.5 | 20 | 90 | 180 | 110 ±0,3 | 220 |

1) Max.